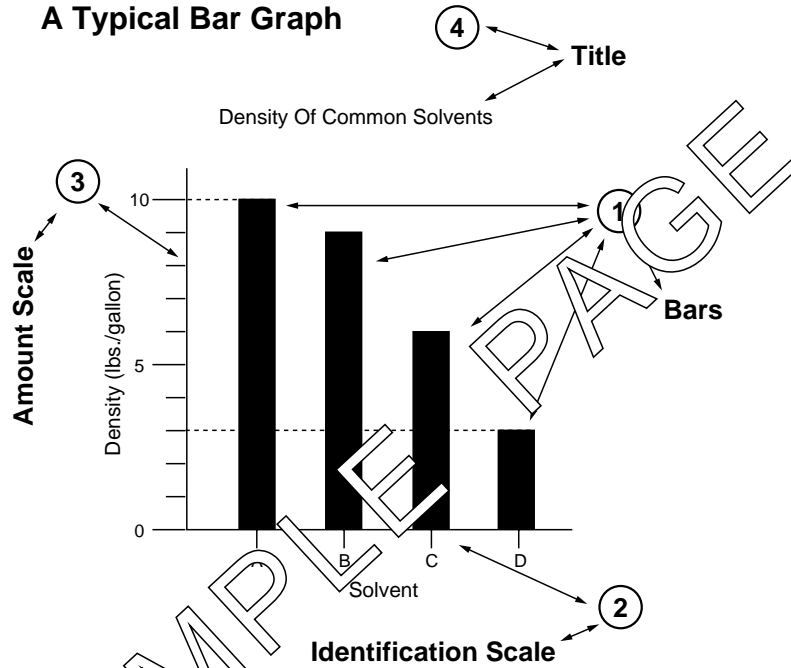


OK. Let's get started. This course will help you read and prepare several types of graphs. As you take this course, you will be reading and making _____ .

graphs	
--------	--

Panel 1

A Typical Bar Graph



(Panel 1)

Graphs are pictures of numerical data. Panel 1 shows a typical _____ graph. One way of picturing numerical data is by using a _____ .

bar bar graph	
------------------	--

(Panel 1)

The number (1) has arrows pointing to the bars. How many bars are shown?
 (2) has an arrow pointing to the _____ .

4 Identification Scale	
---------------------------	--

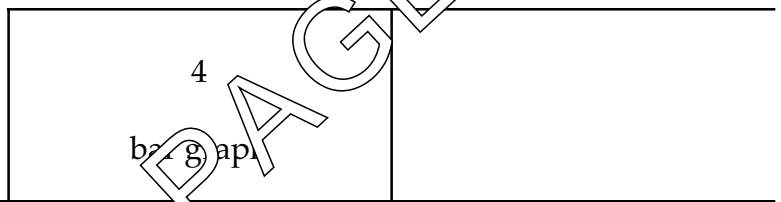
(Panel 1 - You may also use Panel 3 which is identical)

What parts of the bar graph are indicated by the arrows from (a) ③; (b) ④?

(a) Amount Scale	(a)
(b) Title	(b)

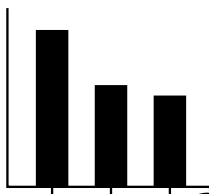
(Panel 1 - You may also use Panel 3 which is identical)

The encircled numbers (i.e. ①) on the panel show that there are _____ (number) major parts of a _____.

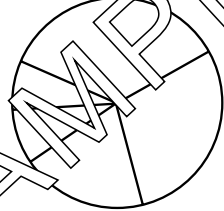


Panel 2

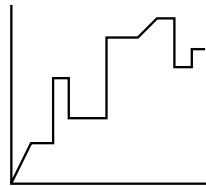
Typical Graphs



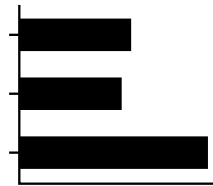
(a)



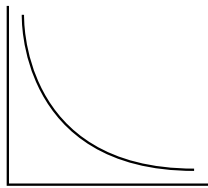
(b)



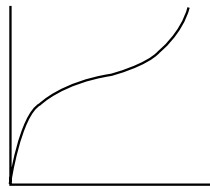
(c)



(d)



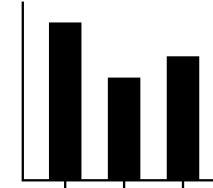
(e)



(f)



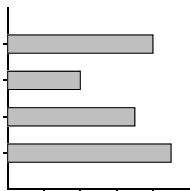
(g)



(h)

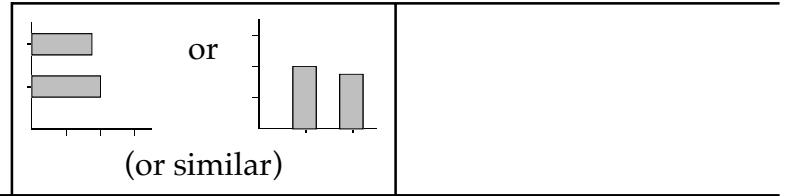
(Panel 2)

The sketch below shows another way a bar graph can be drawn. Which of the figures shown in Panel 2 are bar graphs?



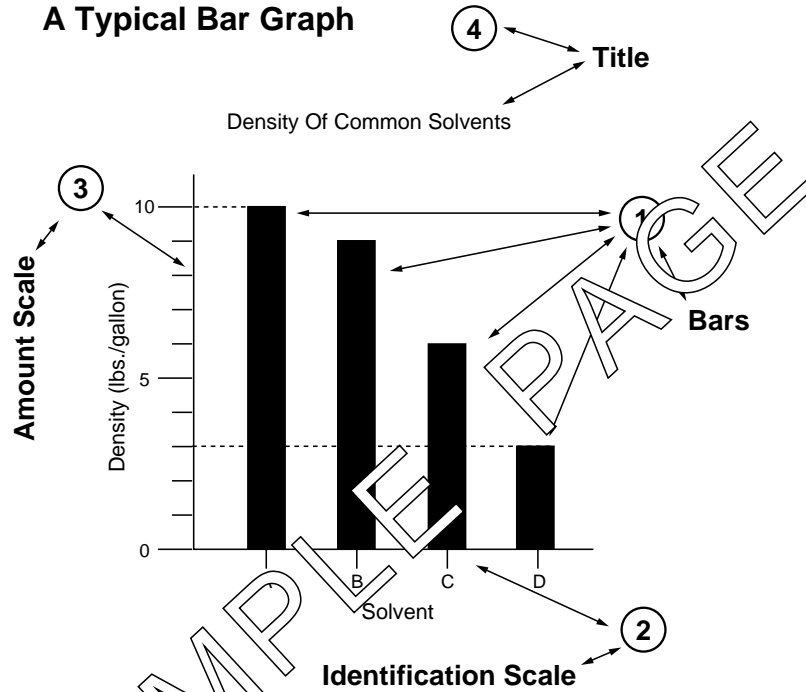
a d g h	
------------------	--

Draw a simple sketch of a bar graph.



Panel 3

A Typical Bar Graph



(Panel 3)

The shaded or darkened areas in a bar graph are called _____ .

The bars picture data for you to use.

① in Panel 3 shows the _____ .

Bars picture _____ .

bars	
bars	
data	

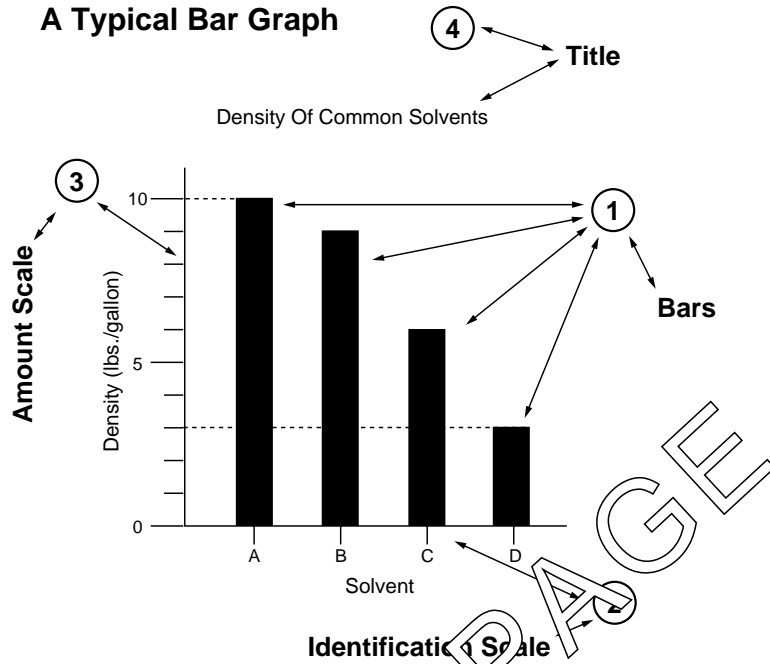
(Panel 3)

You can determine the numerical value pictured by the bars by extending the line forming the end of the bar until it touches the Amount Scale. The tallest bar pictures a density of 10 lbs./gallon.

What density does the shortest bar picture?

3 lbs./gallon	
---------------	--

Panel 3



(Panel 3)

What density is indicated by the remaining two bars on the graph? (Any order) The numerical values for the bars were found on the scale (parallel with/at the base of) the bars.

9 lbs./gal. 6 lbs./gal. parallel with	
---	--

(Panel 3)

Any time you write a value which you have read from a graph, you must also write the units that describe that value. In Panel 3, the shortest bar reads as 3 lbs./gallon. The numerical value shown by the bar is 3.

What are the units?

lbs./gallon	
-------------	--

(Panel 3)

To be correct, any value read from any graph must be written to show both the numerical value and the _____.

units	
-------	--

(Panel 3)

If you wrote that the tallest bar on Panel 3 shows a value of 10, you would be _____ (correct/incorrect).

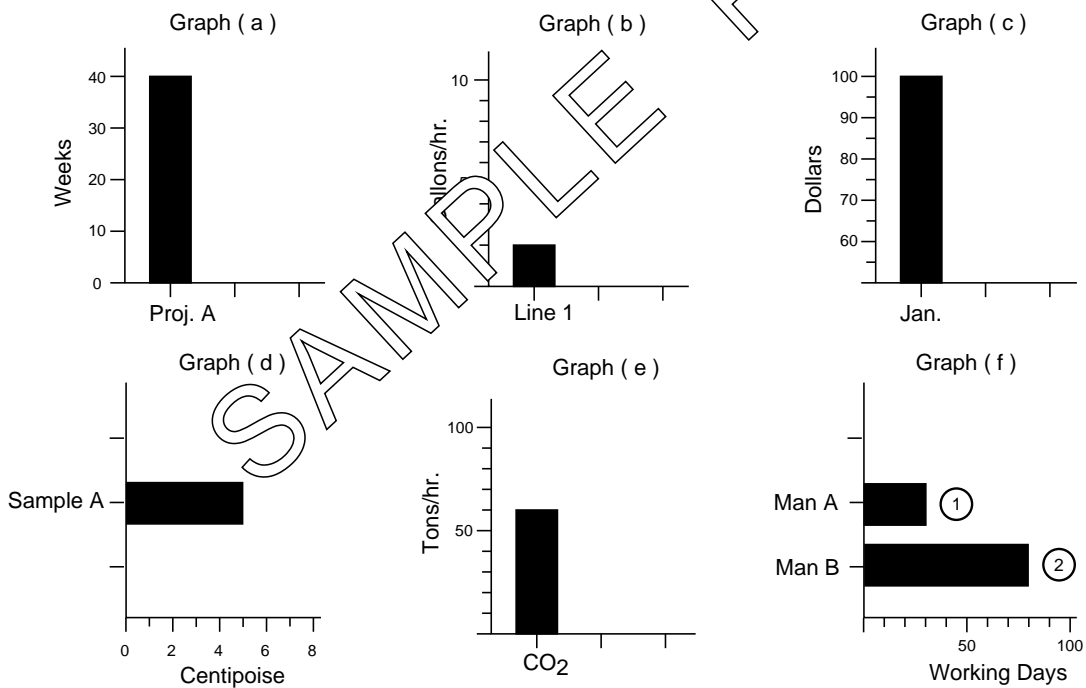
incorrect	
-----------	--

In the list shown below of values read from graphs, which ones are written correctly? (NOTE - All the graphs showed units on the Amount Scale.)

- | | |
|-----------|------------|
| a. 3 | d. 217 |
| b. 6 oz. | e. 0.7 |
| c. 8 yrs. | f. 18 tons |

b, c, f	
---------	--

Panel 4

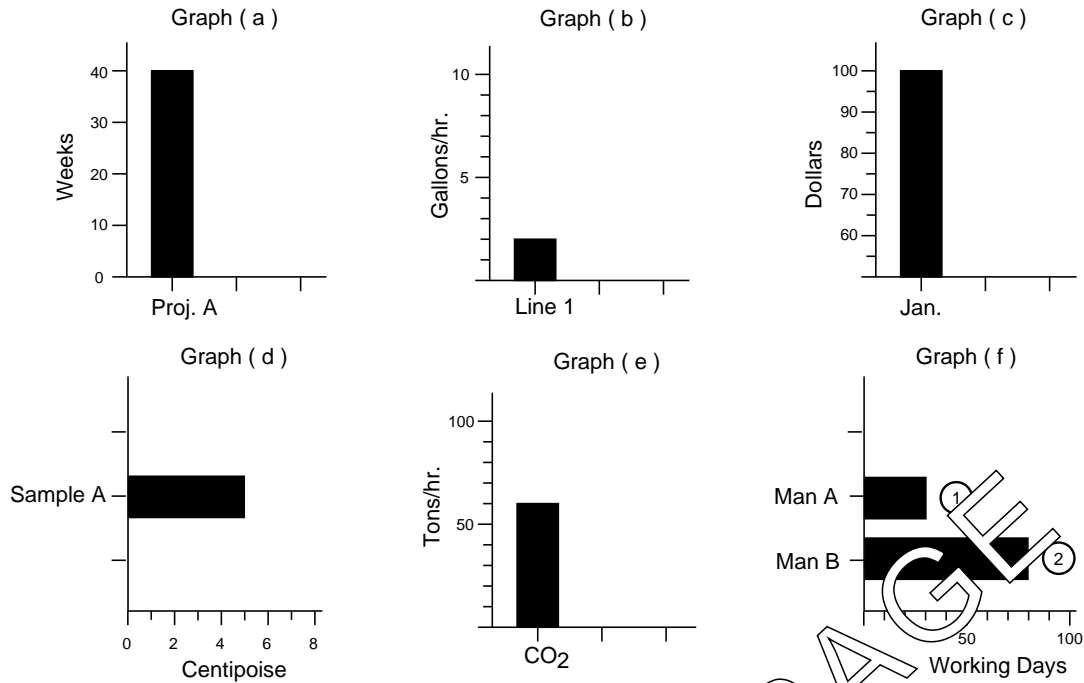


(Panel 4)

What are the units on the Amount Scale of Graph (a) shown in Panel 4?

weeks	
-------	--

Panel 4



(Panel 4)

Numerical values for the bars are found on the scale _____ the bars.
 Write the value pictured by the bars in Graphs (a) and (b) shown in Panel 4.
 Be sure to show the proper units (e.g. 5 lbs./gallon).

parallel with	_____
a. 40 weeks	a.
b. 2 gal./hr	b.

(Panel 4)

Write the numerical values pictured by the bars in Graphs (c) and (d).

c. 100 dollars	c.
d. 5 centipose	d.

(Panel 4)

Write the numerical values for the bars in Graphs (e) and (f). (bar 1 and bar 2)

e. 60 tons/hr.	e.
f. (bar 1) 30 working days	f. (bar 1)
f. (bar 2) 80 working days	f. (bar 2)